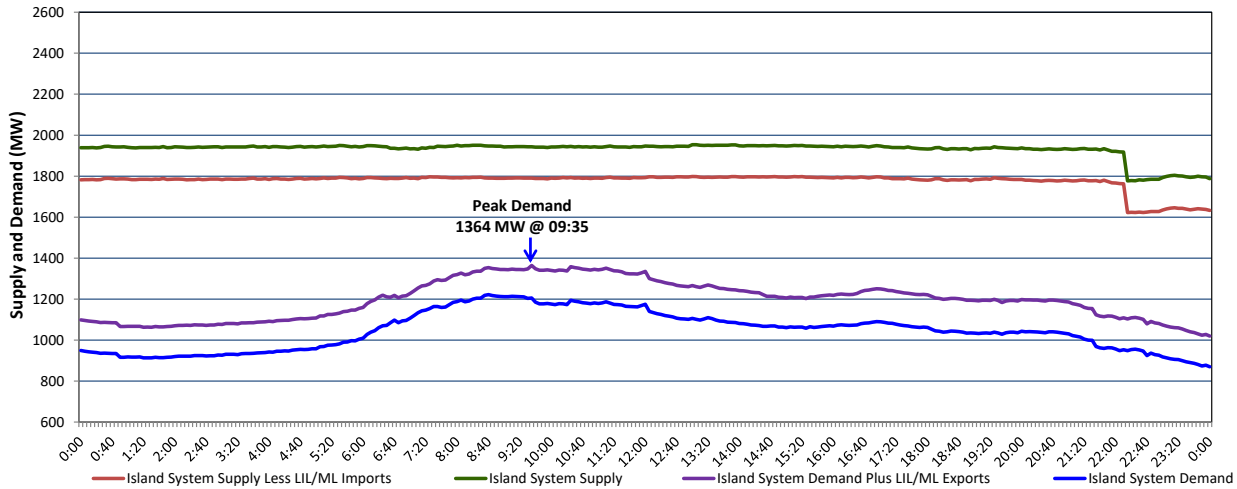


Newfoundland Labrador Hydro (NLH) Supply and Demand Status Report Filed Thursday, April 21, 2022

Section 1 Island Interconnected System Supply, Demand & Exports Actual 24 Hour System Performance For Wednesday, April 20, 2022



Supply Notes For April 20, 2022

1,2

- A As of 0857 hours, April 04, 2022, Holyrood Unit 3 unavailable due to planned outage (150 MW).
 B As of 0850 hours, April 11, 2022, Bay d'Espoir Unit 1 unavailable due to planned outage (76.5 MW).
 C As of 0813 hours, April 19, 2022, Holyrood Unit 2 returned to service 150 MW (170 MW).
 D At 1200 hours, April 20, 2022, Hawkes Bay Plant available at 2.5 MW (5 MW).
 E At 1456 hours, April 20, 2022, Hawkes Bay Plant available at full capacity (5 MW).
 F At 2215 hours, April 20, 2022, Holyrood Unit 1 available but not operating 140 MW (170 MW).

Section 2 Island Interconnected Supply and Demand

Thu, Apr 21, 2022	Island System Outlook ³		Seven-Day Forecast		Temperature (°C)		Island System Daily Peak Demand (MW)	
					Morning	Evening	Forecast	Adjusted ⁷
Available Island System Supply: ⁵	1,806	MW	Thursday, April 21, 2022	4	0	1,200	1,106	
NLH Island Generation: ^{4,8}	1,275	MW	Friday, April 22, 2022	0	4	1,165	1,072	
NLH Island Power Purchases: ⁶	150	MW	Saturday, April 23, 2022	2	0	1,105	1,012	
Other Island Generation:	225	MW	Sunday, April 24, 2022	2	3	1,135	1,042	
ML/LIL Imports:	156	MW	Monday, April 25, 2022	3	3	1,075	983	
Current St. John's Temperature & Windchill:	3 °C	N/A	Tuesday, April 26, 2022	4	4	1,010	918	
7-Day Island Peak Demand Forecast:	1,200	MW	Wednesday, April 27, 2022	3	4	1,085	992	

Supply Notes For April 21, 2022

3

- Notes:
1. Generation outages for running and corrective maintenance are included. These are not unusual for power system operations. They generally do not impact customer supply. The power system operators schedule outages to system equipment whenever possible to coincide with periods when customer demands are low and sufficient supply reserves are available. However, from time to time equipment outages are necessary and reserves may be impacted.
 2. Due to the Island system having no synchronous connections to the larger North American grid, when there is a sudden loss of large generating units there may be a requirement for some customer's load to be interrupted for short periods to bring generation output equal to customer demand. This automatic action of power system protection, referred to as under frequency load shedding (UFLS), is necessary to ensure the integrity and reliability of system equipment. Under frequency events have typically occurred 5 to 8 times per year on the Island Interconnected System and the resultant customer load interruptions are generally less than 30 minutes. With the activation of the Maritime Link frequency controller during the winter of 2018, UFLS events have occurred less frequently.
 3. As of 0800 Hours.
 4. Gross output including station service at Holyrood (24.5 MW) and improved NLH hydraulic output due to water levels (35 MW).
 5. Gross output from all Island sources (including Note 4).
 6. NLH Island Power Purchases include: CBPP Co-Gen, Nalcor Exploits, Rattle Brook, Star Lake, Wind Generation and capacity assistance (when applicable).
 7. Adjusted for curtailable load, market activities and the impact of voltage reduction when applicable.
 8. Due to limitations inherent in the design of combustion turbines, the output of combustion turbines may be reduced in the event that ambient temperatures exceed the threshold.

Section 3 Island Peak Demand Information Previous Day Actual Peak and Current Day Forecast Peak

Wed, Apr 20, 2022	Actual Island Peak Demand ⁹	9:35	1,364 MW
Thu, Apr 21, 2022	Forecast Island Peak Demand		1,200 MW

- Notes: 9. Island Demand / LIL / ML Exports (where applicable) is supplied by NLH generation and purchases, plus generation owned and operated by Newfoundland Power and Corner Brook Pulp & Paper (Deer Lake Power, DLP).